



# ACROBAT 1" LED DOWNLIGHT SHALLOW PLENUM

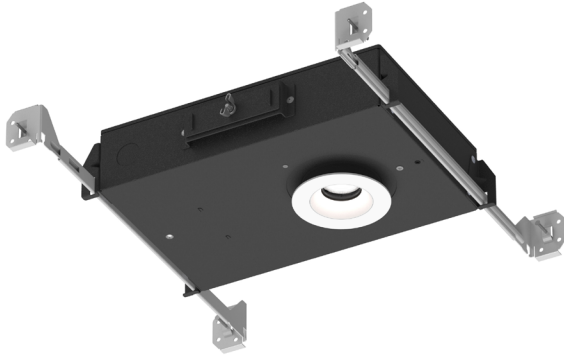
PROJECT: \_\_\_\_\_

TYPE: \_\_\_\_\_

NOTE: \_\_\_\_\_

SPEC-00274 ACROBAT 2.0, 1" SP, V-1.3, UPDATED 10/14/2022

A1-SIC, A1-SNC



## ACROBAT PERFORMANCE AND PRECISION

A1-S - Shallow Plenum

Up to 1197 Delivered Lumens

Multiple Dimming Drivers Available

### LED LIGHT ENGINE

RATED WATTAGE	<b>10W or 15W</b>
DELIVERED LUMENS	Up to 1197 lm @ 4000K
EFFICACY	Up to 81.5 LPW @ 4000K
CCT @ 90CRI	2700K, 3000K, 3500K, 4000K, Warm Dim
COLOR QUALITY	90+ CRI, 2-Step SDCM
LED LIFETIME	55,000 hours @ L90

### DELIVERED LUMENS MATRIX

		10° Optic	30° Optic	50° Optic	80° Optic
10 Watt	2700K (90CRI)	683 lm	729 lm	652 lm	606 lm
	3000K (90CRI)	724 lm	772 lm	691 lm	643 lm
	3500K (90CRI)	765 lm	816 lm	730 lm	679 lm
	4000K (90CRI)	786 lm	839 lm	751 lm	698 lm
	Warm Dim	492 lm	526 lm	472 lm	359 lm
15 Watt	2700K (90CRI)	975 lm	1040 lm	931 lm	865 lm
	3000K (90CRI)	1033 lm	1102 lm	986 lm	917 lm
	3500K (90CRI)	1091 lm	1164 lm	1041 lm	968 lm
	4000K (90CRI)	1122 lm	1197 lm	1071 lm	996 lm
	Warm Dim	763 lm	815 lm	732 lm	557 lm

### SILENT VU™ OPTICS TECHNOLOGY

OPTICS	10°, 30°, 50°, 80° available
MEDIA	Clear, Solite, Frosted, Linear Spread, Hex Louver

### POWER SUPPLY

INPUT VOLTAGE	120-277V, 50/60Hz
DIMMING	Multiple dimming drivers available
SERVICEABILITY	Below Ceiling Access

### TRIM OPTIONS

- Round or Square
- Standard or Trimless
- Pinhole, Slot Pinhole
- Wall Wash
- Wet Location

### TRIM COLORS

- White
- Black
- Custom Color
- Champagne
- Satin Aluminum

### REFLECTOR COLORS

- White
- Black
- Clear Alzak
- Champagne
- Satin Aluminum
- Custom Color

### HOUSING INSTALLATION

- New Construction includes (2) galvanized steel adjustable hanger bars
- 5/8" – 2" ceiling thickness
- Min Plenum Height: 2½" Shallow
- Ceiling Material: Drywall, T-bar grid, Wood and Millwork
- Steel junction box with up to (6) ½" knockouts
- SIC models are Air Tight
- SIC models are CCEA (Chicago Plenum)  
(Note: polycell spray-in foam insulation must be kept 3" from housing)

### LISTINGS AND WARRANTY

cULus Listed for 40°C Ambient	ASTM E283 Certified Airtight for IC Rated Housings
UL Listed for Damp Location	UL Listed for Wet Location (Wet Location Trim Style)
IC Rated and Non IC Rated Available	CCEA (Chicago Plenum) Approved for IC Rated Housings
Five (5) years limited warranty	CA Title 24-JA8 Compliant





# ACROBAT 1" LED DOWNLIGHT SHALLOW PLENUM

PROJECT: \_\_\_\_\_

TYPE: \_\_\_\_\_

NOTE: \_\_\_\_\_

SPEC-00274 ACROBAT 2.0, 1" SP, V-1.3, UPDATED 10/14/2022

A1-SIC, A1-SNC

## ORDER MATRIX

### A1-SIC, A1-SNC

1" SHALLOW PLENUM NEW CONSTRUCTION HOUSING (EXAMPLE: A1-SIC-RST-02790-30-10S-SHB)

HOUSING BASE					
FAMILY APERTURE	INSTALLATION TYPE			TRIM SHAPE	TRIM STYLE
A1- Acrobat 1"	<b>SIC</b> (Shallow Plenum New Construction, IC, CCEA)			<b>-R</b> (Round)	<b>ST</b> (Standard)
	<b>SNC</b> (Shallow Plenum New Construction)			<b>-S</b> (Square)	<b>TL</b> (Trimless)
CEILING		LED PERFORMANCE		OPTIC AND MEDIA	
CEILING THICKNESS	CCT	CRI	OPTIC	MEDIA 1	MEDIA 2
<b>-0</b> (5/8" Ceiling Thickness)	<b>27</b> (2700K)	<b>90</b> (90 CRI)	<b>-10</b> (10° Spot)	(blank) (None)	(blank) (None)
<b>-1</b> (1 1/4" Ceiling Thickness)	<b>30</b> (3000K)		<b>-30</b> (30° Narrow Flood)	<b>CL</b> (Clear Lens)	<b>CL</b> (Clear Lens)
<b>-2</b> (2" Ceiling Thickness)	<b>35</b> (3500K)		<b>-50</b> (50° Flood)	<b>MP</b> (Solite Lens)	<b>MP</b> (Solite Lens)
	<b>40</b> (4000K)		<b>-80</b> (80° Wide Flood)	<b>FR</b> (Frosted Lens)	<b>FR</b> (Frosted Lens)
	<b>WD<sup>3</sup></b> (1800K~3000K)			<b>LS</b> (Linear Spread Lens)	<b>LS</b> (Linear Spread Lens)
			<b>HX<sup>4</sup></b> (Hex Louver)		
DRIVER ASSEMBLY					
WATTAGE	LED DIMMING DRIVER		HANGER BAR		
<b>-10</b> (10 Watt)	<b>S<sup>4</sup></b> (Universal Dim Driver: 1%-100% 0-10V, TRIAC, ELV, 120V/277V)		<b>-SHB</b> (Standard)		
<b>-15<sup>2</sup></b> (15 Watt)			<b>-C24</b> (24" C-Channel)		
	<b>REMOTE LED DIMMING DRIVER</b>		<b>-C48</b> (48" C-Channel)		
	<b>SR1<sup>4</sup></b> (Remote Universal Dim: 1%-100% 0-10V, TRIAC, or ELV, 120V/277V)				

1. Cannot be used with a second media.

2. 15 Watt option only available for SNC (Shallow Plenum New Construction) only.

3. Media 1 lens required. For WD with 10°, 30°, 50° Optic use MP (Solite Lens). For WD with 80° Optic use FR (Frosted Lens).

4. TRIAC, ELV dimming for 120V only.

1" SHALLOW PLENUM NEW CONSTRUCTION TRIM (EXAMPLE: A1-RSTWT-STWT-NL)

TRIM				REFLECTOR		
FAMILY APERTURE	TRIM SHAPE	TRIM STYLE	TRIM FINISH	REFLECTOR STYLE	REFLECTOR FINISH	REFLECTOR LENS
A1- Acrobat 1"	<b>R</b> (Round)	<b>ST</b> (Standard)	<b>TL</b> (Trimless)	<b>-ST<sup>2</sup></b> (Standard)	<b>WT</b> (White)	<b>-NL</b> (No Lens)
		<b>TL</b> (Trimless)	<b>WT</b> (White/)	<b>-PH<sup>2</sup></b> (Pinhole)	<b>BK</b> (Black)	<b>-CL</b> (Clear)
	<b>S</b> (Square)		<b>BK</b> (Black)	<b>-SP<sup>2</sup></b> (Slot Pinhole)	<b>CA<sup>3</sup></b> (Clear Alzak)	<b>-MP</b> (Solite)
			<b>CN</b> (Champagne)	<b>-WW</b> (Wall Wash, Round Only)	<b>CN</b> (Champagne)	<b>-FR</b> (Frosted)
			<b>SA</b> (Satin Aluminum)		<b>SA</b> (Satin Aluminum)	
		<b>CC<sup>1</sup></b> (Custom Color)		<b>CC<sup>1</sup></b> (Custom Color)		

1. Custom color only available for ST (Standard) Trim and ST (Standard) Reflector only, contact CSL for details.

2. Wet Location rated when used with Additional Reflector Lens.

3. CA (Clear Alzak) Finish only available for R (Round), ST (Standard) Reflector.

## EMERGENCY OPTIONS

**EM-1000** (25W Remote Inverter)

**EM-1003** (35W Remote Inverter)

**EM-1004** (50W Remote Inverter)

**EM-1002** (10W Remote Inverter)

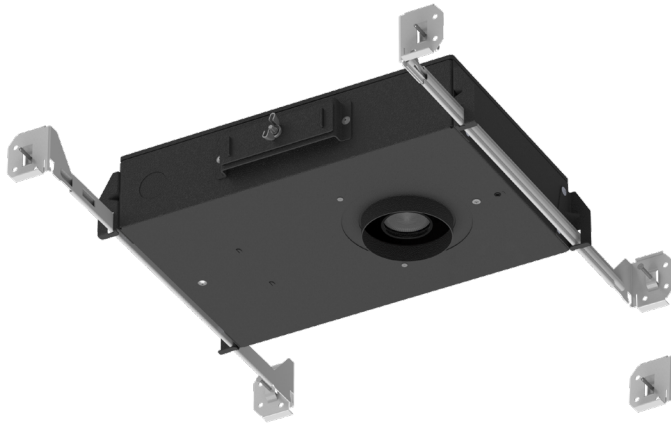
**EM-1003-CA** (35W Remote Inverter) Title 20

**EM-1006** (25W Remote Inverter) Title 20

**HOUSING AND LIGHT ENGINE LINE DRAWINGS**

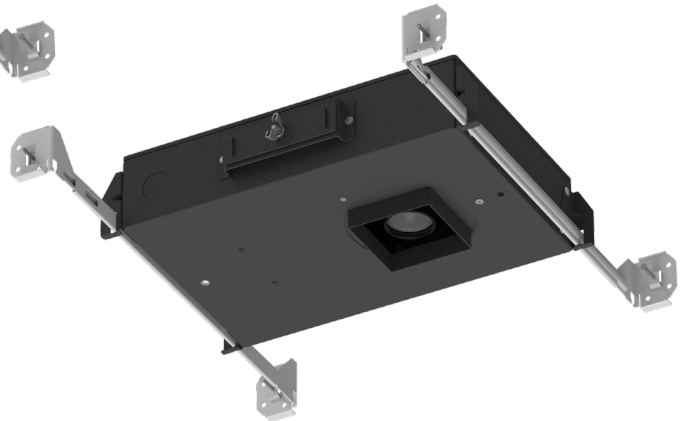
A1-SIC, A1-SNC  
Shallow Plenum Housing

**CEILING THICKNESS**



**A1-SIC-R**

Acrobat 1" - Shallow Plenum New Construction IC Housing - Round



**A1-SNC-R**

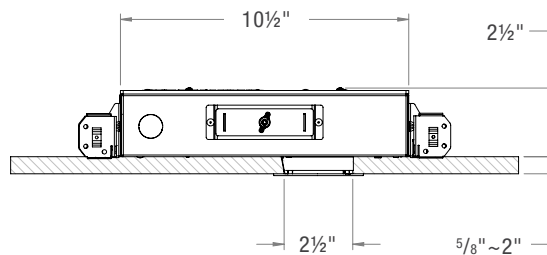
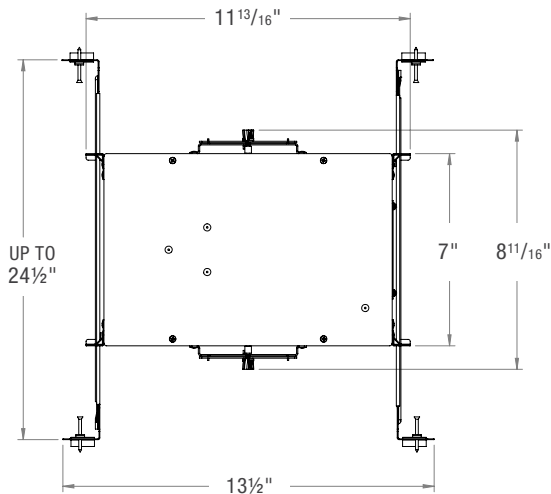
Acrobat 1" - Shallow Plenum New Construction Housing - Round

**A1-SIC-S**

Acrobat 1" - Shallow Plenum New Construction IC Housing - Square

**A1-SNC-S**

Acrobat 1" - Shallow Plenum New Construction Housing - Square





**ACROBAT 1" LED DOWNLIGHT  
SHALLOW PLENUM**

PROJECT: \_\_\_\_\_

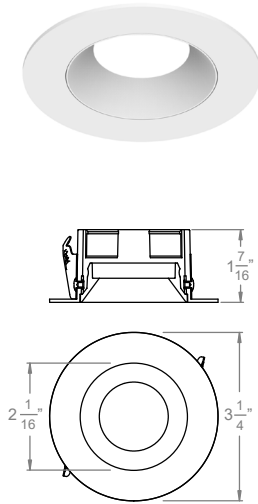
TYPE: \_\_\_\_\_

NOTE: \_\_\_\_\_

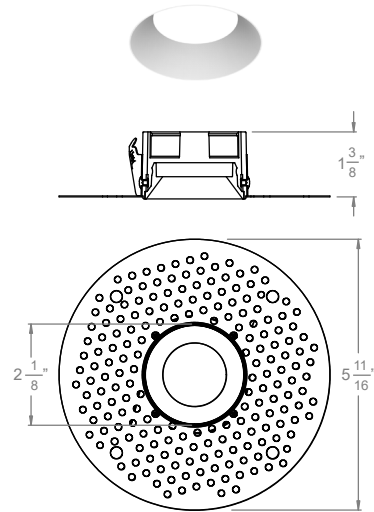
SPEC-00274 ACROBAT 2.0, 1" SP, V-1.3, UPDATED 10/14/2022

A1-SIC, A1-SNC

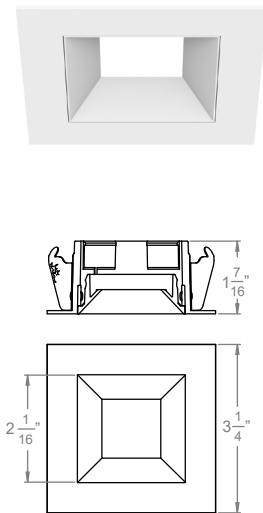
**TRIM STYLES**



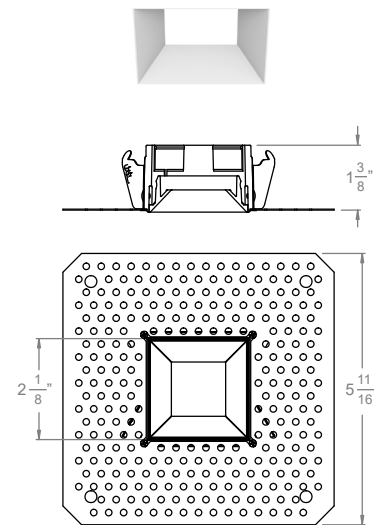
**RST**  
1" Acrobat Round Standard Trim  
(with Standard Reflector)



**RTL**  
1" Acrobat Round Trimless Mud Plate  
(with Standard Reflector)



**SST**  
1" Acrobat Square Standard Trim  
(with Standard Reflector)



**STL**  
1" Acrobat Square Trimless Mud Plate  
(with Standard Reflector)



**ACROBAT 1" LED DOWNLIGHT  
SHALLOW PLENUM**

PROJECT: \_\_\_\_\_

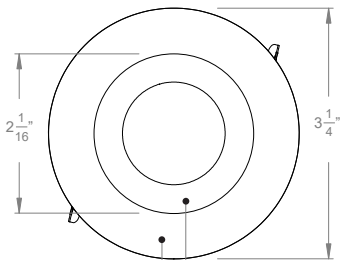
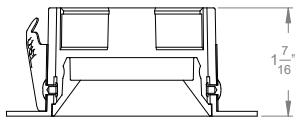
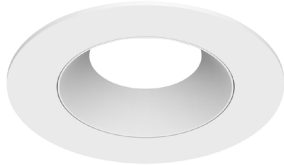
TYPE: \_\_\_\_\_

NOTE: \_\_\_\_\_

SPEC-00274 ACROBAT 2.0, 1" SP, V-1.3, UPDATED 10/14/2022

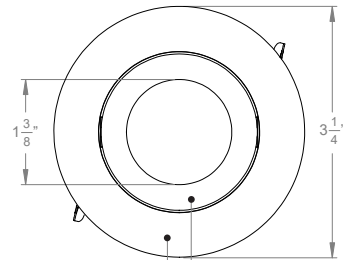
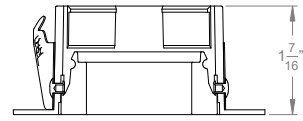
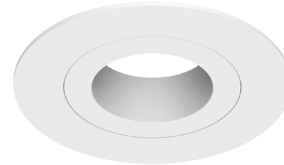
A1-SIC, A1-SNC

**REFLECTOR STYLE (ROUND)**



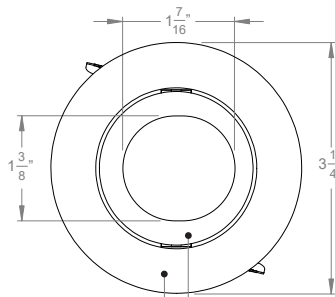
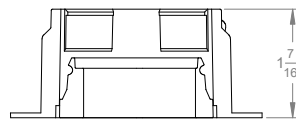
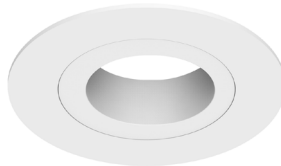
Trim Reflector  
**RST -ST**

1" Acrobat Round Standard Trim with Standard Reflector



Trim Reflector  
**RST -PH**

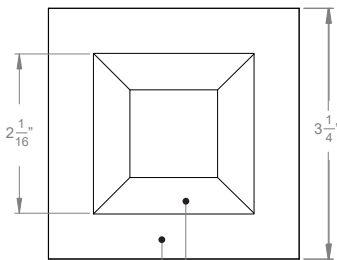
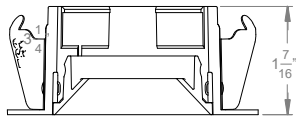
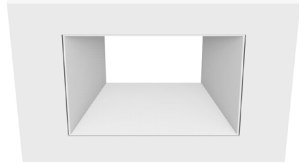
1" Acrobat Round Standard Trim with Pinhole Reflector



Trim Reflector  
**RST -SP**

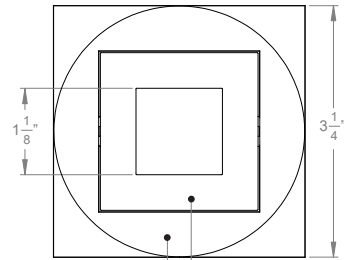
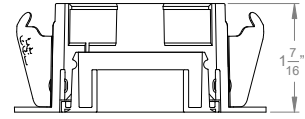
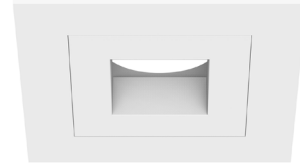
1" Acrobat Round Standard Trim with Slot Pinhole Reflector

**REFLECTOR STYLE (SQUARE)**



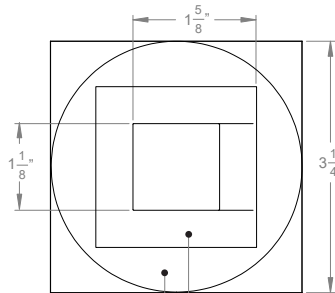
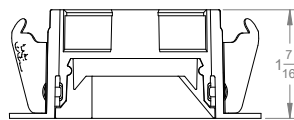
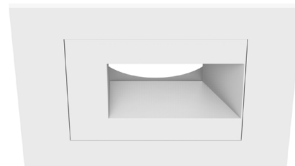
Trim     Reflector  
**SST     -ST**

1" Acrobat Square Standard Trim  
with Standard Reflector



Trim     Reflector  
**SST     -PH**

1" Acrobat Square Standard Trim  
with Pinhole Reflector



Trim     Reflector  
**SST     -SP**

1" Acrobat Square Standard Trim  
with Slot Pinhole Reflector



# ACROBAT 1" LED DOWNLIGHT SHALLOW PLENUM

PROJECT: \_\_\_\_\_

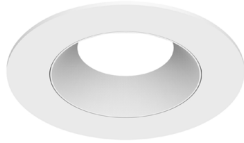
TYPE: \_\_\_\_\_

NOTE: \_\_\_\_\_

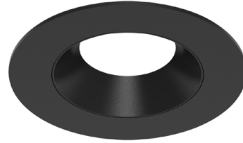
SPEC-00274 ACROBAT 2.0, 1" SP, V-1.3, UPDATED 10/14/2022

A1-SIC, A1-SNC

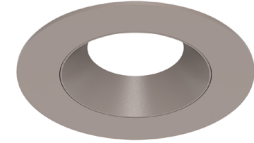
## TRIM FINISHES



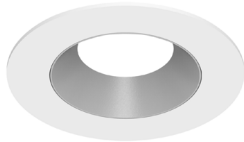
**RSTWT-STWT**  
WT White Trim  
WT White Reflector



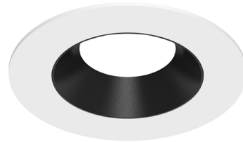
**RSTBK-STBK**  
BK Black Trim  
BK Black Reflector



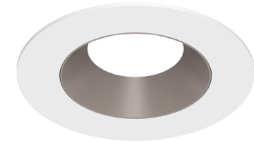
**RSTCN-STCN**  
CN Champagne Trim  
CN Champagne Reflector



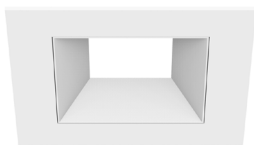
**RSTWT-STSA**  
WT White Trim  
SA Silver Reflector



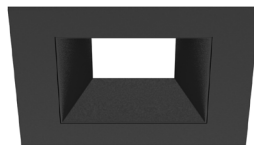
**RSTWT-STBK**  
WT White Trim  
BK Black Reflector



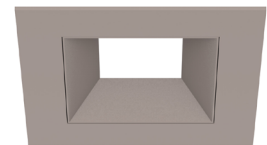
**RSTWT-STCN**  
WT White Trim  
CN Champagne Reflector



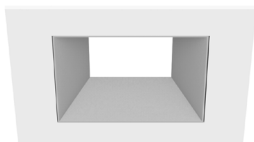
**SSTWT-STWT**  
WT White Trim  
WT White Reflector



**SSTBK-STBK**  
BK Black Trim  
BK Black Reflector



**SSTCN-STCN**  
CN Champagne Trim  
CN Champagne Reflector



**SSTWT-STSA**  
WT White Trim  
SA Silver Reflector



**SSTWT-STBK**  
WT White Trim  
BK Black Reflector



**SSTWT-STCN**  
WT White Trim  
CN Champagne Reflector



# ACROBAT 1" LED DOWNLIGHT SHALLOW PLENUM

PROJECT: \_\_\_\_\_

TYPE: \_\_\_\_\_

NOTE: \_\_\_\_\_

SPEC-00274 ACROBAT 2.0, 1" SP, V-1.3, UPDATED 10/14/2022

A1-SIC, A1-SNC

## DIMMING DRIVER COMPATIBILITY

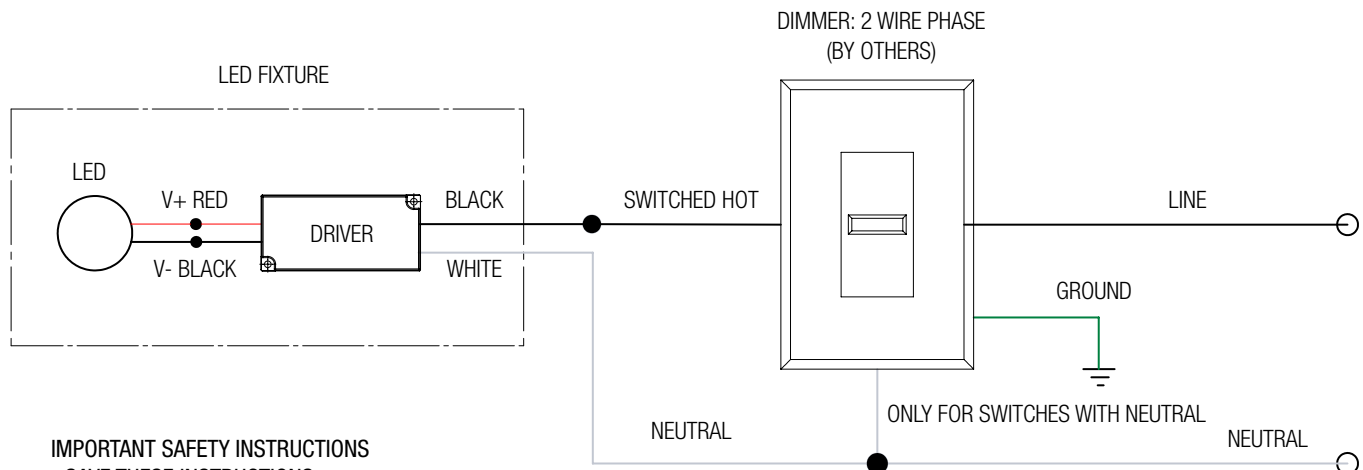
### DIMMER LIST

"S" ERP PHASE-CUT DIMMERS			
Dimmer Information			
Manufacturer	Product	Manufacturer	Product
Cooper	DAL06P	Lightolier	ZP260QEW
	DLC03P	Lutron	CT103P
	SLC03P		DV600P
Leviton	6161		DVCL-153P
	6631-2		DVELV303P
	6633-P		FAELV500
	6673-10W		LG600P
	6683-IW		MAELV600
	IPE04		S600P
	IPI06-1LZ		S-603PG
	VPE06		SELV300P
			TG-600P
			TGCL-153P

**NOTES:**

Wiring diagrams are examples of typical installations intended to illustrate the number of wires that must be run to fixture. These diagrams are not intended to specify all equipment necessary for a given dimming circuit. Refer to specific dimmer manufacturer's documentation for details.

### S- ERP DRIVER 2 WIRE PHASE DIMMING



**IMPORTANT SAFETY INSTRUCTIONS  
- SAVE THESE INSTRUCTIONS**

1. Keep these instructions in a safe place for future reference.
2. Only qualified electricians in accordance to local codes should install these fixtures.
3. De-energize the electrical circuit at the circuit breaker prior to installation process or servicing.
4. Make sure all connections are in accordance with the National Electrical Code and any local regulations.
5. Cap any wires not used separately (not together).



**DIMMING DRIVER COMPATIBILITY**

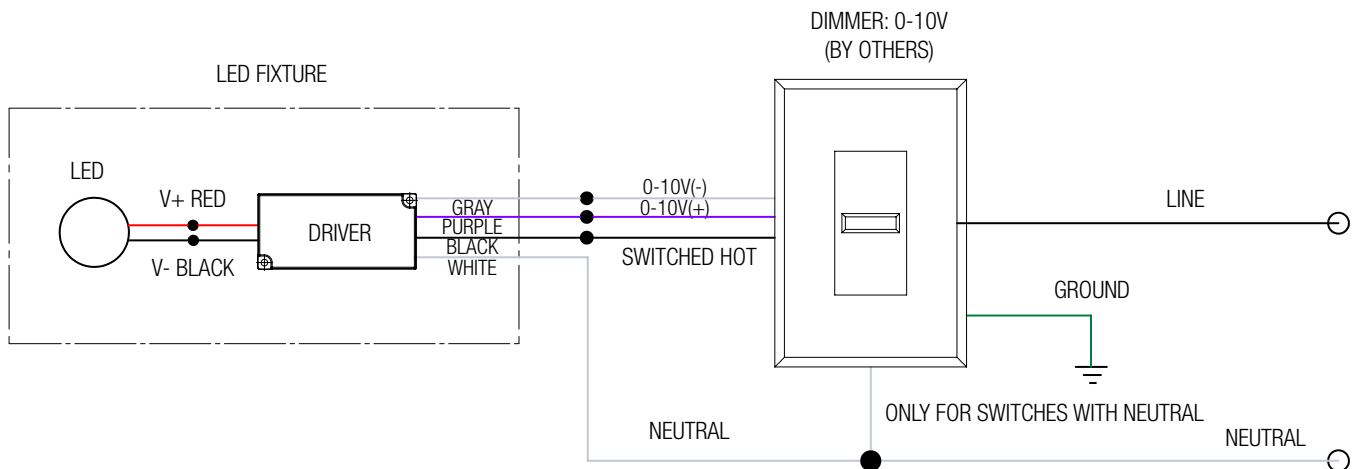
**DIMMER LIST**

"S" ERP 0-10V	
Dimmer Information	
Manufacturer	Product
Leviton	IP740-DLZ
Lightolier	ZP600FAM120
	V2000FAMU
Lutron	DVTV
	NTFTV
Crestron	CLS-EXP-DIMFLV
	DIN-4DIMFLV4
	DIN-A08
	GLX-DIMFLV8

**NOTES:**

Wiring diagrams are examples of typical installations intended to illustrate the number of wires that must be run to fixture. These diagrams are not intended to specify all equipment necessary for a given dimming circuit. Refer to specific dimmer manufacturer's documentation for details.

**S- ERP DRIVER  
0-10V DIMMING**



**IMPORTANT SAFETY INSTRUCTIONS**

**- SAVE THESE INSTRUCTIONS**

1. Keep these instructions in a safe place for future reference.
2. Only qualified electricians in accordance to local codes should install these fixtures.
3. De-energize the electrical circuit at the circuit breaker prior to installation process or servicing.
4. Make sure all connections are in accordance with the National Electrical Code and any local regulations.
5. Cap any wires not used separately (not together).

**DIMMING DRIVER COMPATIBILITY**

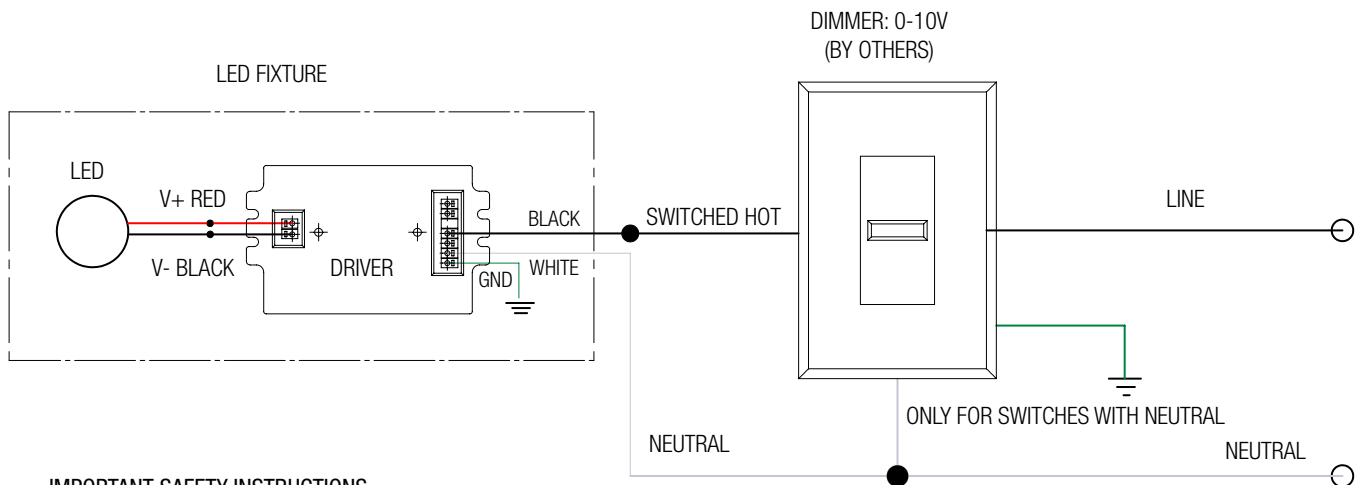
**DIMMER LIST**

"L1" Lutron Hi-lume 2-Wire	
Dimmer Information	
Manufacturer	Product
Leviton	IPE04
	IPI06-1LZ
	6633-P
Lutron	DVELV300P
	DVCL-153P
	S600P
Cooper	DAL06P
	DLC03P
	SLC03P

**NOTES:**

Wiring diagrams are examples of typical installations intended to illustrate the number of wires that must be run to fixture. These diagrams are not intended to specify all equipment necessary for a given dimming circuit. Refer to specific dimmer manufacturer's documentation for details.

**L1- LUTRON DRIVER  
2-WIRE DIMMING**



**IMPORTANT SAFETY INSTRUCTIONS**

**- SAVE THESE INSTRUCTIONS**

1. Keep these instructions in a safe place for future reference.
2. Only qualified electricians in accordance to local codes should install these fixtures.
3. De-energize the electrical circuit at the circuit breaker prior to installation process or servicing.
4. Make sure all connections are in accordance with the National Electrical Code and any local regulations.
5. Cap any wires not used separately (not together).